
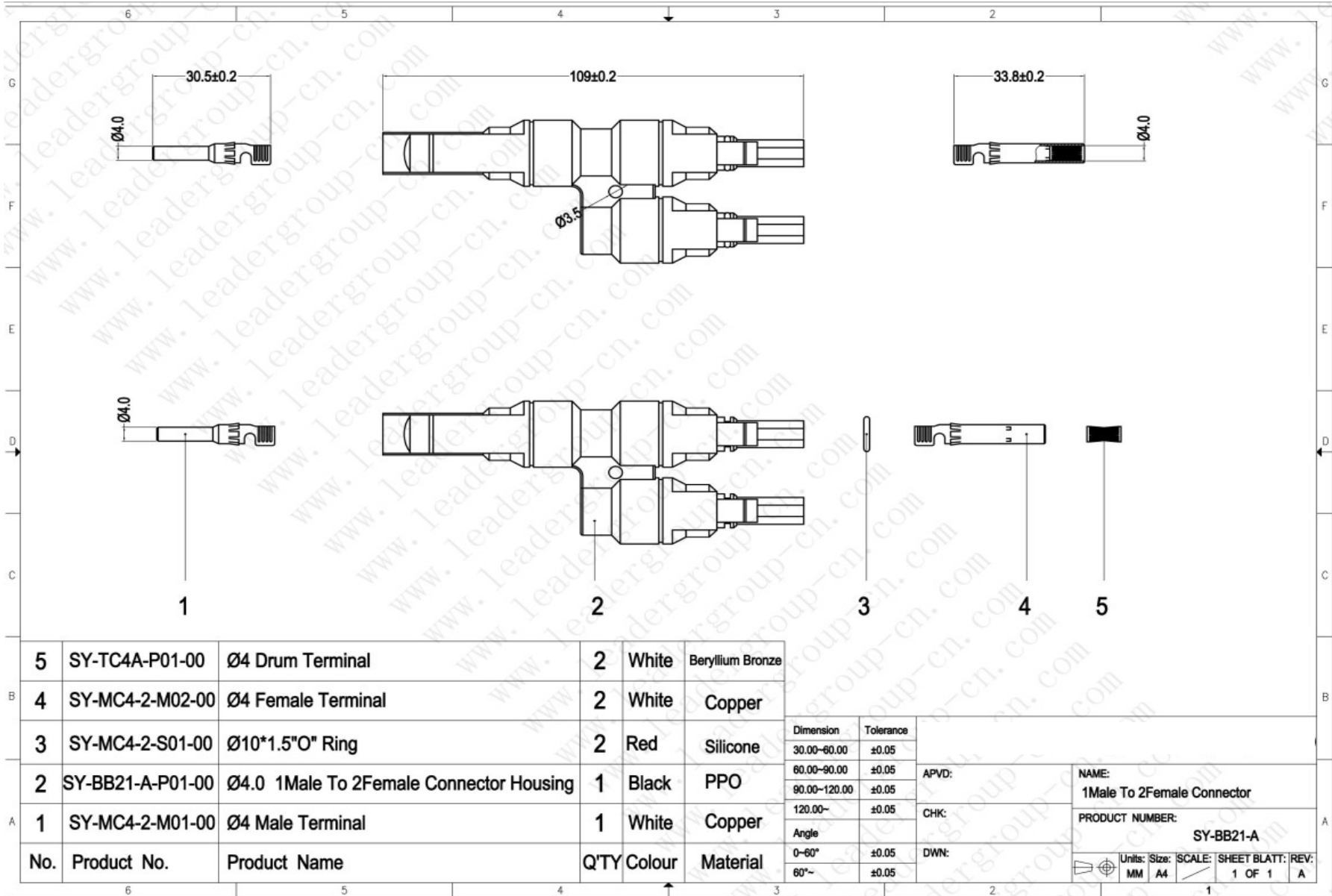




Energie Douce

Systèmes & Solutions Autonomes en Energie

Item	Model No	Picture	Specification	state
NO.1	SY-BB21-A/B		<ul style="list-style-type: none">1.Contact: Tin-plated copper2.Waterproof: IP673.Housing material: 100% GE PPO.4. Rated Voltage: TUV1500V DC5.pin Dimension: 4.0mm6.Temperature Range: -40°C~+90°C7.Flame Class:UL94V-08.Resistance: $\leq 5\text{m}\Omega$9.Pollution degree:210.Protection Class: Class II	



5	SY-TC4A-P01-00	Ø4 Drum Terminal	2	White	Beryllium Bronze
4	SY-MC4-2-M02-00	Ø4 Female Terminal	2	White	Copper
3	SY-MC4-2-S01-00	Ø10*1.5"O" Ring	2	Red	Silicone
2	SY-BB21-A-P01-00	Ø4.0 1Male To 2Female Connector Housing	1	Black	PPO
1	SY-MC4-2-M01-00	Ø4 Male Terminal	1	White	Copper
No.	Product No.	Product Name	Q'TY	Colour	Material

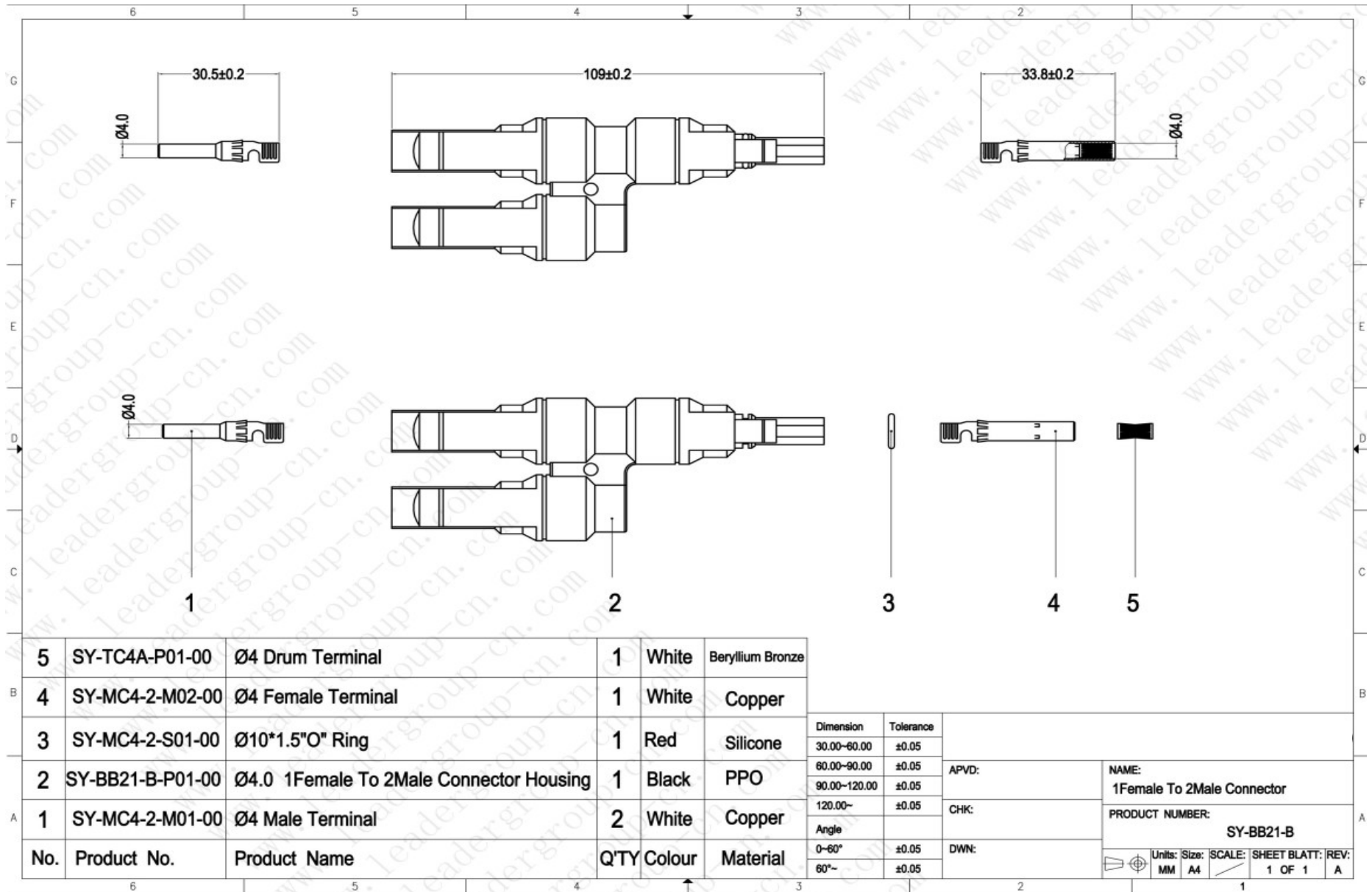
Dimension	Tolerance
30.00-60.00	±0.05
60.00-90.00	±0.05
90.00-120.00	±0.05
120.00~	±0.05
Angle	
0-60°	±0.05
60°~	±0.05

APVD:
CHK:
DWN:

NAME:
1Male To 2Female Connector

PRODUCT NUMBER:
SY-BB21-A

Units: Size: SCALE: SHEET BLATT: REV:
MM A4 / 1 OF 1 A



5	SY-TC4A-P01-00	Ø4 Drum Terminal	1	White	Beryllium Bronze
4	SY-MC4-2-M02-00	Ø4 Female Terminal	1	White	Copper
3	SY-MC4-2-S01-00	Ø10*1.5"O" Ring	1	Red	Silicone
2	SY-BB21-B-P01-00	Ø4.0 1Female To 2Male Connector Housing	1	Black	PPO
1	SY-MC4-2-M01-00	Ø4 Male Terminal	2	White	Copper
No.	Product No.	Product Name	Q'TY	Colour	Material

Dimension	Tolerance		
30.00-60.00	±0.05	APVD:	NAME: 1Female To 2Male Connector
60.00-90.00	±0.05		
90.00-120.00	±0.05		
120.00-	±0.05	CHK:	PRODUCT NUMBER: SY-BB21-B
Angle		DWN:	
0-60°	±0.05		
60°-	±0.05		

Units:	Size:	SCALE:	SHEET BLATT:	REV:
MM	A4	1	1 OF 1	A